



# BRIGHTS

Hardware store

More than just a hardware store

# CELEBRATING

# 45

# YEARS

— SINCE  1971 —

*We couldn't have done it without you!*



## R59995

Limited Stock  
100 available

Bosch Angle Grinder  
115mm 670W  
GWS6700 • 115mm Grinding blade included  
• 11000Rpm • Robust slim design  
• Metal gear housing  
• 1 Year warranty  
12132



## R99995

Bosch Cordless Impact Drill Professional 10.8V  
GSB1080-2-LI • 2 x 10.8V 1.5Ah Li-ion batteries  
• Variable 2-speed: 0-400/1300Rpm • Max torque: 28Nm  
• 10mm Chuck • Carry case included  
• 1 Year warranty  
14491

## R59995

Limited Stock  
100 available

Bosch Impact Drill Professional 550W

GSB1300RE • Variable speed: 0-2700Rpm  
• 13mm Geared chuck with 1.5-13mm • New improved compact design • Handle and depth gauge included  
• 1 Year warranty  
11344



## R1399

Limited Stock  
100 available

Bosch Rotary Hammer Professional 600W

GBH2000 • 600W Power input • 1.7 Joules  
• Variable speed: 0-1400Rpm • Overload clutch  
• SDS chuck • 20mm Concrete drilling capacity  
14119



Like us: **Brights Hardware**



Follow us: **@BrightsHardware** | We deliver



Valid at all stores from 9 June to 2 July 2016. | Web: [www.brights.co.za](http://www.brights.co.za) • Email: [brights@brights.co.za](mailto:brights@brights.co.za) • Tel: 0861 333 777





Buy me for a chance to win a R500 or R1000 BRIGHTS Voucher



**R2995**

115mm (19093)  
Continuous rim for ceramic  
• Industrial quality • Quality guarantee  
**BRIGHTS Diamond Cutting Disc**

**R3495**

115mm (22469) =  
Segmented for brick • Industrial quality • Quality guarantee

**R9995**

230mm (24924) =  
Segmented for brick • Industrial quality • Quality guarantee

**R1195**

115mm x 2.5mm (62988)  
To cut mild steel

**Kronenflex Cutting Disc**

115mm x 1mm (308019) =  
To cut steel/stainless steel

**R1295**

115mm x 6mm (312286) =  
For grinding of steel/mild steel

**R1995**

230mm x 3mm (62251) =  
For cutting steel/mild steel

**R2495**

**R6495**

25mm (68137)  
**Titan Ratchet Tie Down**  
25mm: Break force 680kg, 4.5m length  
• 50mm: Break force 1360kg, 5.5m length  
• 6 Month warranty

**R12495**

50mm (68138) =

**R1195**

**Titan Hacksaw 300mm**  
High tension square tubular frame  
• Aluminium handle with soft rubber grip  
• Blade quick change mechanism  
• 1 Year warranty on frame  
11238

**R9995**



450mm (328304)  
**Titan Handsaw**  
3-angle ground teeth  
• Inductive heat-treated teeth • Premium alloy steel blade • Ergonomic grip  
• 1 Year warranty

**R13995**

550mm (65383) =

**R1699**

**Bosch Tile Cutter PTC 640**  
Ergonomic shaped handle for convenient cutting  
• Steel rail for secure clamping of tiles  
• Side wings with moveable extensions for the base plate to support bigger tiles  
• Max tile size cut: 0° = 640mm  
13645

**R39995**

**Titan 2-Ton Trolley Jack**  
Package: Heavy duty blowcase  
• Min height: 130mm  
• Max height: 345mm • Base width: 90mm  
• Includes carry case • 1 Year warranty  
68155

**R24495**

2-ton (68997)

**Titan Bottle Jacks**

Hydraulic with overload protection  
• Manufactured by the world's no. 1 jack factory  
• Includes carry case • 1 Year warranty

3-ton (68153) = **R25995**

5-ton (68154) = **R32995**

15-ton (327207) = **R56995**

**R11995**

**2pc Rubberised Navy Rain Suit**  
Medium, Large, X-Large  
• Boots excluded  
331864, 331865, 331866



**R1999**

**MatWeld Welding Kit**  
200A Inverter with complete cable kit  
• 60% Duty cycle • Digital read out  
• Carry strap • Auto darkening helmet  
• Fully adjustable • Grinding function  
• 1 Year warranty on both items  
3948

**R7995**

**Wayne Gumboots**  
Available in sizes: 6 to 11  
• Wide fitting • Ankle recesses  
• Sole support  
14467, 9150, 7364,  
7376, 7382, 53094



**R9995**

1.1kg (27764)

**Titan Club Hammer**

All-steel core covered with fibreglass handle • 1 Year warranty

1.8kg (55969) = **R10995**



**R9995**

6pc (19088)

**Titan Screwdriver Sets**

Rubber grip, Black tipped • Includes slotted and phillips screwdrivers  
• 1 Year warranty

10pc (65155) = **R15995** each



**R19995**

**Dirt Trapper Mats 420mm x 700mm**

Ultra-absorbent  
• Works on wet or dry dirt  
• Machine washable  
• Available in: brown, grey, black, oatmeal, wheat  
63928, 63929, 63931, 63933, 301750



**R23995** per pair

**Titan 2-Ton Trestle**

Min height: 300mm, max height: 400mm  
• Pin type • 1 Year warranty  
68999



**R33995** per pair

3-ton (68158)

**Titan Trestle**

3-ton: Min height: 288mm, max height: 425mm

• 6-ton: Min height: 395mm, max height: 425mm • Ratchet type

• 1 Year warranty

6-ton (302393) = **R59995** per pair



**R7995**

**Lasher Secateur**

Pruning bypass secateurs  
• Safety lock mechanism  
• Medium duty  
919

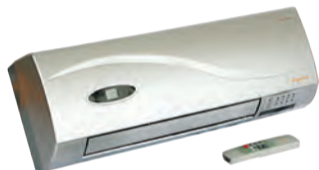


**R6995**

**Rechargeable Hot Water Bottle**

220VAC/500W  
• Charge time: 8-10 min = ±1-2 hours of heat • Heat range: 68°-75°C  
• Safety cut-out at 80°C  
• Improved design  
• 6 Month warranty  
20034

**BRIGHTS BARGAIN**



**R62995**

**Wall Mounted Heater**

220VAC 2000W  
• Includes remote control • Heat range: 10-49°C • Dual purpose fan and heater  
• Digital display • SABS approved  
• 1 Year warranty  
20043



**R25995**

307569  
**ACDC 3-Bar Halogen Heater**

3 Heat settings: 300W/900W/1200W  
• SABS approved • Oscillating function  
• 1 Year warranty

With Remote (307568) = **R36995**

Filled LPG gas bottles available in store  
5kg • 9kg • 14kg  
19kg • 48kg



**R89995**

**Totali Roll-About Full Body Gas Heater**

3 Ceramic panels • 3 Heat settings  
• Piezo ignition • Swivel castors for easy movement • Excludes 9kg cylinder • Fully enclosed for safety • 1 Year warranty  
17426



**R2999**

**Megamaster Fireplace 700mm Pyramid Complete**

Includes 3.2m flue pipes, rotating cowl, basket grate and ashtray  
16841



**R11995**

**Kaufmann Whistling Stainless Steel Kettle 2.5l**

Stainless steel body with Bakelite handle  
• Foldaway handle for easy storage  
333953



**R44995**

**LK's Cast Iron Enamel no.12 Bake Pot**

Easy to clean • Can be used on open fire  
9733



**R23995**

**WACO Bathroom Heater**

220VAC 1200W • 2 Heat settings: 600W/1200W  
• Infrared heating • SABS approved  
• 1 Year warranty  
63904



**R17995**

**Gas Turbo Lighter**

Fits 3kg, 4.5kg and 5kg cylinders  
• Fitted with flexible hose: 1.4m  
20812



**R9995**

**Tiara Stainless Steel Cleaner**

Specially formulated to clean and maintain stainless steel products and surfaces • Restores damaged, corroded or unsightly stainless steel products and surfaces to its original finish • Also suitable for aluminium, chrome, copper, brass and ceramics  
1005950

Buy one get one FREE



**R3399**

**LK's Chef Camper Gas Braai**

Includes a high pressure regulator for use with 9 to 48kg cylinders • Removable Aluminium legs  
• Chrome plated grill • Grade 304 stainless steel  
• 1.2mm Sheet metal thickness  
• Dimensions: 670mm x 345mm  
9583



**R2599**

**LK's Chef Mini Spit**

Includes regulator and gas hose (fits 3kg, 4.5kg and 5kg cylinders) • Includes a rotisserie motor and 1 x ceramic infrared burner • Grade 304 Stainless Steel • Chrome plated rotisserie basket • 1.2mm Sheet metal thickness • 1 Year warranty  
• Dimensions: 585mm x 345mm  
9581



**R99995**

2-Burner (300168)  
**Cast Iron Boiling Table**

30mm Square steel tubing • Removable adjustable legs • Includes regulator and 2m gas hose • 1000mm x 600mm x 700mm

3-Burner (300169) = **R1499**

1410mm x 600mm x 700mm



**R39995**

**LK's Cast Iron no.3 Three Legged Pot 7.8l**

6834



**R24995**

**Megamaster 3pc Fireplace Toolset**

Universal black powder coated toolset • Includes stand with scoop, poker and brush  
24702



**R49995**

**LK's Outdoor Firepit**

LK's outdoor firepit with pan • Mild steel  
• Pit size: 480mm diameter x 560mm(H)  
• Pan size: 610mm x 610mm • Outdoor use  
320004



**R4699**

**Cast Iron Ashton Fireplace 6kW**

Suitable for 60m<sup>2</sup> room size based on ceiling height of 2.4m • Size: 530mm(H) x 380mm(W) x 330mm(D) • Weight: 52kg • 10 Year limited guarantee • Excludes 125mm flue kit  
20021



**R15995**

**LK's Fireplace Log Stand**

Mild steel • Size: 340mm(W) x 600mm(H)  
• Excludes wood  
301650



**R41995**

**Megamaster Tuscan Fireplace Screen**

3-panel fireplace screen  
• 965mm(W) x 610mm(H)  
310485



**R5499**

**Megamaster Econo Complete Built-in Braai 1.2m**

2.4mm Steel • One large grid and ember maker  
• Ash scraper, potjie hook and light fitting  
• 2.4m Square mild steel flue and cowl included  
25724





**R 1499**

**Bosch Cordless Li-ion Drill Kit 18V**  
GSR1800-LI • 2 x 1.5Ah 18V Batteries  
• 1 Hour intelligent quick charger  
• 10mm Keyless auto lock chuck  
• Var/Rev 2-speed: 0-400/1300Rpm  
• 25 Torque settings, Max 34Nm  
• Carry case included  
• 1 Year warranty  
14118



**R 1099**

**Bosch Jigsaw Professional 710W**  
GST8000E • No-load stroke rate 500-3100spm  
• Tool-less blade change  
• Adjustable 3-4 stage saw blade pendulum action  
• 1 Year warranty  
19277



**R 3199**

**Bosch Mitre Sliding Saw 254mm 1800W**  
PCM1800SD • 254mm 40-Tooth TCT blade included • 4800Rpm speed  
• Cutting depth: 80mm, width: 335mm  
• Includes laser light guidance, dust bag, work piece clamps and table extension supports • 1 Year warranty  
8096



**R 699<sup>95</sup>**

**Lawnstar Blower/Vacuum/Mulcher 2800W**  
Two-way selector for vacuuming or blowing • Mulcher function through fan • Large 45l collection bag • 270km per hour blowing speed  
• 1 Year warranty  
4006



**R 599<sup>95</sup>**

**Duram Wall & Ceiling White 20l**  
Interior walls and ceilings  
• Excellent obliteration • Low odour  
• Washable • Matt finish  
327411



**R 579<sup>95</sup>**

**Rock Grip Plaster Primer 20l**  
White only • Good quality alkali resistant plaster primer • For interior and exterior unpainted porous surfaces • Solvent based  
66304



**R 469<sup>95</sup>**

**Dulux PearlGlo Non-Drip Enamel 5l**  
Water based non drip enamel  
• Low gloss satin finish  
• For interior and exterior use on wood, steel or plaster • White only  
16825



**R 129<sup>95</sup>**

**Sika Sticks Like Sh\*t Clear White 290ml**  
Bonds wood, bricks, metal, stone • Sticks to wet surfaces  
• Bonds instantly • Maximum strength achieved in 24 hours  
301250, 9443



**R 399<sup>95</sup>**

**BEE 3-Pack Paintbrush Set**  
Sizes: 28mm, 35mm and 50mm  
327421



**R 399<sup>95</sup>**

**Bostik Marine Silicone 280ml**  
Non-toxic sealant • Ideal for fish tanks  
16394



Includes 1 x Free Membrane

**R 999<sup>95</sup>**

**ABE Hydroproof 5l**  
Available in various colours • For use on parapets, walls, flashings and for sealing of joints • Water based  
• 5 Year quality guarantee



**R 389<sup>95</sup>**

**Alcolin Vinoseal 5l**  
White or Aluminium • Liquid vinyl waterproofing • Solvent based  
• Can be used when rain is imminent • For use on flat roofs, parapets, etc.  
4856, 5128



**R 999<sup>95</sup>**

**ABE Super Laykold Spray and Seal 400ml**  
For use on cracks in walls and brickwork • Seals gutters, roof tiles and roof sheeting • Solvent based  
• Paintable once cured • Black only  
8658



**R 395<sup>95</sup>** each

**Sapphire Bath/Shower Mixer (12647)**  
**Triumph Sapphire Range**  
SABS approved • Single lever mixers  
• Balanced water pressure required for installation

Sapphire Basin Mixer (9723) = **R 595<sup>95</sup>**

Sapphire Sink Mixer (9989) = **R 595<sup>95</sup>**



**R 1699**

**Ronague Spring Type Sink Mixer KSM4**  
Sleek modern design with quality spring for lasting service  
• SABS approved • Single lever  
• Balanced water pressure required  
23387



**R 2499**

**Foxdale Restraint Sink Mixer KSM7**  
Multi-functional deck type sink mixer  
• SABS approved • Single lever  
• Balanced water pressure required  
9632



**R 349<sup>95</sup>**

**5pc Classique Bathroom Accessory Set**  
Consists of: towel rail, towel ring, toilet roll holder with flap, soap dish, robe hook  
• Chrome plated  
326344

**R 2999**

**Trojan Atlas Gas Geyser 16l**  
For indoor and outdoor use  
• Battery ignition • Battery excluded • May only be installed by an LPGSA gas practitioner  
• Other products also available in store: LPG gas, flues, bends and cowls (not included)  
• 1 Year factory warranty  
319475



**R 4999**

**Kwikot Low Pressure Solar System 110l**  
All systems are sold complete and excludes installation • Includes: 12 x vacuum tubes, 1 x framework, 1 x 15mm mixing valve, 1 x float valve, 1 x header tank • 5 Year guarantee  
312762



5 Year Guarantee

**R 4399**

**City Heat Copper Cylinder 150l**  
100kPa • Horizontal copper cylinder  
• Corrosion resistant SABS copper cylinder  
• Ideal for coastal regions • 5 Year guarantee  
6479



5 Year Guarantee

**R 2999**

**Franke Hot Water Cylinder 150l Combo**  
150l 400kPa Water heater • 22mm Advanced 400kPa PRV (SABS) with expansion relief valve  
• PVC drip tray and 2 x 22mm Vacuum breakers  
• 5 Year guarantee on cylinder  
72151



**R 399<sup>95</sup>**

**Pharox LED R50 Reflector Globe 5.5W E14**  
Available in cool white and warm white  
• 300 Lumens • 38° Beam angle  
• 35 000 hour lifespan • 1 Year warranty  
335133, 335134



**R 749<sup>95</sup>**

**ACDC Solar Motion Detection Security Light 3W**  
310 Lumens • Solar panel: 1.8W with 3m cable and O-ring waterproof connector • Battery: 4400mAh lithium • IP65 • Consistent lighting time for 4.2 hours • 1 Year warranty  
2622



Limited Stock 40 available

**R 949<sup>95</sup>**

**ACDC Solar PIR Security Light 7W with Solar Panel**  
700 Lumens • Solar panel: 5W  
• 3.7V 8000mAh Li-ion rechargeable and replaceable battery  
• Sensitive PIR motion sensor • IP65 • Material: Aluminium alloy and toughened glass • Solar charging time: 8-9 hours in bright sunlight • Operating time: 7 nights when fully charged  
• 1 Year warranty  
2623



**R 699<sup>95</sup>**

**ISD Straight Down Lighter 3-Pack 220V**  
Available in white and satin chrome  
• GU10 globe not included  
• Pressed steel material • Cut-off size: 55mm  
• Includes GU10 earth lamp holder  
• 1 Year warranty

**R 799<sup>95</sup>**

Satin Chrome (9433) =

**BRIGHTS BARGAIN**



**R 459<sup>95</sup>**  
**Osram Dichroic 220V 4.8W LED**  
Available in cool white and warm white  
• Non dimmable • GU10  
• 36° Beam angle • 350 Lumens  
• 4.8W replaces 50W Halogen spot lamp  
• 2 Year guarantee  
7757, 7758



Limited Stock 800 available of each

**R 399<sup>95</sup>**  
**Osram GLS 9.5W LED Globe**  
Available in E27 and B22D  
• Available in warm white only  
• 806 Lumens • Non dimmable  
• 9.5W replaces 60W incandescent lamp • 2 Year guarantee  
7915, 7782



Limited Stock 100 available of each

**R 699<sup>95</sup>**

**WACO Ceiling Bathroom Heater**  
Includes wall mounting switch  
• 275W Heat lamps  
• 1.5m Flexible PVC duct and R63 42W Halogen globe • Motor: 30W  
• 3 Year warranty

**R 799<sup>95</sup>**

4-Light (12384) =



**R 399<sup>95</sup>**

**Matelec Bulkhead LED Cool White Slim Line 16W**  
32 LED module • Clear cover • 1000 Lumens  
• 30 000 Hours • Suitable for outdoor use  
• IP65 • 3 Year warranty  
6857



**R 319<sup>95</sup>**

**PIOLED Slim Fitting LED Light**  
2ft: 20W replaces 2 x 18W T8  
• 4ft: 40W replaces 2 x 36W T8  
• 6000K • IP33  
• 2ft: 1800 Lumens • 4ft: 3600 Lumens  
• 2 Year warranty

**R 499<sup>95</sup>**

4ft (16) =



**R 799<sup>95</sup>**

**Pharox GLS Filament LED Globe 4W**  
Available in warm white only  
• Available in E27 only • 440 Lumens  
• 300° Beam angle • 3 Year guarantee  
13091



**R699<sup>95</sup>**  
**Duolite Awning 1.2m**  
 Bronze, white, clear, grey • UV resistant  
 • Easy to install • 3 Year warranty  
 307440, 307441, 307442, 309729



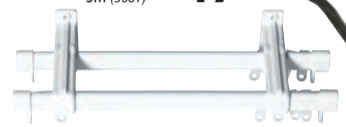
**R24<sup>95</sup>**

1.5m (3679)  
**Super 'C' Track Single Rufflette**  
 Super 'C' steel track complete with poly brackets, wheel runners, end stops and screws to fix • White only

2m (3693) = **R32<sup>95</sup>**

2.5m (3680) = **R40<sup>95</sup>**

3m (3681) = **R49<sup>95</sup>**



**R41<sup>95</sup>**

1.5m (3696)  
**Super 'C' Track Double Rufflette**  
 Super 'C' steel track complete with poly brackets, wheel runners, end stops and screws to fix • White only

2m (3695) = **R56<sup>95</sup>**

2.5m (3699) = **R70<sup>95</sup>**

3m (3670) = **R84<sup>95</sup>**



From **R123<sup>95</sup>**

600mm x 1000mm  
**Rufflette Mahogany 25mm Venetian Blinds**  
 Made of durable rust resistant Aluminium  
 • 25mm slats offer complete control of light and privacy • Easy to install and operate  
 • Installation instructions and all accessories included  
 • Available in size:  
 600mm x 1000mm (5295)  
 1000mm x 1000mm (5296)  
 1000mm x 1600mm (5402)  
 1600mm x 1000mm (5485)



From **R99<sup>95</sup>**

600mm x 1000mm  
**Rufflette Silver or White 25mm Venetian Blinds**  
 Made of durable rust resistant Aluminium  
 • 25mm slats offer complete control of light and privacy • Easy to install and operate  
 • Installation instructions and all accessories included • Available in size:  
 600mm x 1000mm (4133, 4695)  
 1000mm x 1000mm (4134, 4790)  
 1000mm x 1600mm (4178, 4997)  
 1600mm x 1000mm (4556, 5213)

**R59<sup>95</sup>**

**Aluminium Weather Door Seal**  
 Keeps wind and rain out  
 • Easy to install • Screws included  
 9006



**R1199**

**Multi-Purpose Ladder**  
 Aluminium • Fully extended length: 3.58m • Weight capacity: 150kg  
 108096



**R42<sup>95</sup>**

5mm x 45mm (8605)  
**Nail In Anchor**  
 Contractors' pack p/100 including masonry drill bit • Wide range of sizes to suit all applications • Fast and easy to install

6mm x 55mm (8613) = **R55<sup>95</sup>**

6mm x 70mm (8719) = **R59<sup>95</sup>**

8mm x 60mm (8724) = **R74<sup>95</sup>**

**R99<sup>95</sup>**

4m Length (575)  
**SouthPro D-Shape PVC Gutter**  
 UV resistant • Gutter width: 125mm  
 • SABS approved

6m Length (576) = **R149<sup>95</sup>**

**R59<sup>95</sup>**

**Southpro D-Shape PVC Downpipe**  
 80mm x 3m socketless downpipe  
 • SABS approved  
 14415



Limited Stock  
 500 available

**R29<sup>95</sup>**

**Rain Gauge**  
 Used for measuring rainfall  
 • Comes with mounting bracket  
 • 1000ml capacity  
 9984



**R899<sup>95</sup>**

**Ladder Combo Blue Trim**  
 6-step and 2-step • Funky range  
 • Aluminium ladder • Weight: 150kg  
 6944



**R699<sup>95</sup>**

**Slatted Hardwood Gate**  
 Exterior use once treated with varnish or linseed oil  
 • 1800mm x 813mm  
 1010



**R89<sup>95</sup>**

**Tylon Specialist Fast Set 6 Hours 20kg**  
 1950



**R34<sup>95</sup>**  
**BRIGHTS Wall & Floor Tile Adhesive 20kg**  
 92309



**R259<sup>95</sup>**

5L (12786)  
**Permabond**  
 All purpose bonding  
 • 5L diluted covers 200m<sup>2</sup>  
 1L (2018) = **R109<sup>95</sup>**

**BRIGHTS BARGAIN**

**R3199<sup>95</sup>**

**Wheelbarrow 90kg**

Light duty design • Pneumatic wheel  
 • Max: 90kg  
 6540



**R79<sup>95</sup>**

**Selfie Stick**  
 Works with most new Android and Apple smart phones  
 • Extends up to 800mm  
 • Wired • 6 Month warranty  
 5561



**R649<sup>95</sup>**

Mini 3 Lines x 5m (10473)

**Retractable Washline**  
 Space saving • Corrosion resistant  
 • Individual line tensioning • Large washline can carry up to 40kg of washing and the Mini up to 30kg • 5 Year guarantee

Large 4 Lines x 8m (10472) = **R799<sup>95</sup>**



**R499<sup>95</sup>**

**Stainless Steel Clothes Dryer**  
 Rust resistant • 1460mm x 605mm x 960mm  
 • Safety lock • Folds flat for easy storage  
 • 16m Drying space  
 310444



**R349<sup>95</sup>**

**Stainless Steel Clothes Dryer**  
 Rust resistant  
 • 1820mm x 550mm x 1070mm  
 • Folds flat for easy storage  
 • 18m Drying space  
 20733



**R59<sup>95</sup>**

per pair  
**Bosch Wiper Blades**  
 16 & 18 inch  
 12745, 12506



**SABS quality approved**

**R10<sup>95</sup>**

Per 4m length (6033)  
**PVC Electrical Conduit 20mm**  
 White PVC • SABS approved

Per 25pc Bundle (6032) = **R259<sup>95</sup>**



**R529<sup>95</sup>**

1.5mm (19675)  
**Twin+Earth Cable 100m Coil**  
 White • SABS approved  
 • 1.5mm (up to 15A)  
 • 2.5mm (up to 25A)

2.5mm (19682) = **R799<sup>95</sup>**



**R79<sup>95</sup>**

per pair  
**Fort Knox 2-Lever Mortice Lock Set**  
 New Aluminium range of handles  
 • Cast Aluminium powder coated  
 • Affordable, durable and attractive  
 • Available in satin chrome, white gloss, antique textured, silver veined, copper veined  
 1303, 1425, 1429, 1433, 1482, 1537



**Rust resistant nylon lock**

**R59<sup>95</sup>**

**Fort Knox 2-Lever Mortice Lock Set**  
 Powder coated handles  
 • Lock made from nylon and Aluminium components • Designed to be rust resistant • 1 Year warranty  
 1115



**R69<sup>95</sup>**

**CRC2-26 Multi-Purpose Lubricant**  
 Improves electrical properties  
 • Displaces and repels moisture  
 • Penetrates and lubricates  
 • Non conductive spray  
 8599



**R2999**

**SMANOS Wireless Alarm System X300**

Plug and play wireless alarm system with built-in battery backup (up to 15 hours) • Remote monitoring, listening, arm and disarm via GSM SIM card (not included) on smart phones or tablets • Entry/exit delay times • 50 Zones  
 • Built-in 110dB siren • Kit includes: 1 x AC adapter, 1 x PIR motion detector and warning stickers • Check in store for add-on devices for this alarm system  
 • 1 Year warranty  
 23446



**R2799**

**SMANOS Wireless Alarm System W100**

Plug and play wireless alarm system with built-in battery backup (up to 15 hours)  
 • Remote monitoring via WIFI/LAN • 30 Zones  
 • Kit includes: 1 x AC adapter, 1 x PIR motion detector and warning stickers • Check in store for add-on devices for this alarm system  
 • 1 Year warranty  
 23445

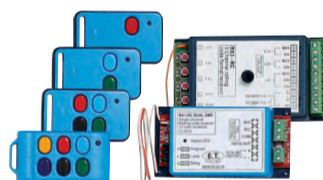


**BRIGHTS BARGAIN**

**R3999**

**GIZZU AHD CCTV 8-Channel Kit**

Includes: 4 x 1MP cameras, 4 x premade 20m cables, power supply, 4-way power splitter, 8-channel DVR, 1TB hard drive • Live streaming over the internet • 1 Year warranty  
 13764



**R115<sup>95</sup>**

1-Button Remote (1169)

**ET Remote**  
 Code rolling • Blue remote range • 1 Year warranty

2-Button Remote (6946) = **R129<sup>95</sup>**

4-Button Remote (5842) = **R142<sup>95</sup>**

6-Button Remote (6235) = **R149<sup>95</sup>**

1-channel Receiver (16964) = **R175<sup>95</sup>**

3-channel Receiver (12063) = **R239<sup>95</sup>**

**ONLINE STORE COMING SOON...**



'Check out' Facebook and Twitter for regular updates.

Prices valid from 9 June to 2 July 2016, or while stocks last. Cash and carry. Actual products and pictures found throughout this BRIGHTS advertisement may vary. E & OE.



**BRIGHTS**  
 Hardware store

More than just a hardware store

**Tel: 0861 333 777**  
**Email: brights@brights.co.za**  
**Web: www.brights.co.za**

**BRIGHTS MONTAGUE PARK**  
 Corner of Ruby and Tanzanite Street, Montague Park, Montague Gardens  
 Tel: 021 551 4080  
 GPS: -33.847605 18.526149

**BRIGHTS BLACKHEATH**  
 Van Riebeeck Road, Blackheath  
 Tel: 021 907 8200  
 GPS: -33.974315 18.710354

**BRIGHTS PLATTEKLOOF**  
 Shop No. 7, Platteklouf Village, No. 2 Baronetcy Blvd, Platteklouf  
 Tel: 021 558 0502  
 GPS: -33.864758 18.572238

**BRIGHTS BOSTON**  
 87, 12th Avenue, Boston, Bellville  
 Tel: 021 949 9988  
 GPS: -33.8937229 18.6148172

**BRIGHTS STIKLAND & BRIGHTS TRUSSES**  
 La Belle Road, Stikland  
 Tel: 021 944 8300  
 GPS: -33.896488 18.670823

**BRIGHTS LANGEBAAN**  
 Shop no. 1 Laguna Mall, Mykonos Crossing, Langebaan  
 Tel: 022 772 0977  
 GPS: -33.046787 18.051531

**BRIGHTS UITZICHT**  
 Corner of Vatican and Athens Street, Uitzicht, Durbanville  
 Tel: 021 200 7900  
 GPS: -33.816750 18.695136



**Payment Methods:** All branches accept Master cards, Visa cards and credit cards. American Express and Buy-aid accepted at all branches, except Langebaan. Diners Club and RCS accepted only at Boston, Stikland and Blackheath.